



# Oona Campbell

W E A T H E R & L I G H T

MacLean  
FINE ART

MacLean  
FINE ART



Oona Campbell

WEATHER & LIGHT

**MacLean Fine Art**

t+f 020 7589 4384

m 07768 793442

e info@macleanfineart.com

Correspondence to:

10 Neville Street, London SW7 3AR

www.macleanfineart.com

Published in connection with the exhibition

Oona Campbell: Weather & Light

Gallery 5 Blenheim Crescent, London W11

(Gallery location shown on last page)

20th March–1st April, 2006

Monday–Friday: 10am–6pm

Saturday: 11am–5pm

Please note that the pictures

in this catalogue represent

only a selection of the works

available at the exhibition

Cover:

**Light on the Mountains**, 2006 (detail; shown fully inside)

oil on linen, 18 x 24 in (46 x 61 cm)

# Oona Campbell

W E A T H E R & L I G H T

**MacLean**

M O D E R N A N D C O N T E M P O R A R Y F I N E A R T



**Evening Loch (Argyllshire)**, 2006, oil on linen, 5 x 6 ft (152 x 183 cm)

*Bonnie Scotland I adore thee,  
Now I wander gladly o'er thee,  
Thy enchantment will restore me,  
Bonnie, bonnie Scotland.*

Traditional Scottish Ballad

## Expansive, brooding highland scenes

It takes something very special to create the sort of fervent excitement that is generated by an Oona Campbell exhibition. Since her first hugely successful exhibition with MacLean Fine Art six years ago, Campbell has become an established and highly regarded figure among contemporary British painters. Her bold and visceral landscapes affirm that the art of painting, though rarely seen in recent years, is still very much alive!

Collectors and admirers of Campbell's painting will be exhilarated to experience her completely unique approach to this most recent body of work presented, again, by MacLean Fine Art. Revisiting her most beloved subject, the Scottish Highlands, her new work ventures towards a more distinctive and literal portrayal of landscape. There is a heightened sense of pictorial honesty and a profound 'atmospheric truthfulness', as described by Nicholas Usherwood (*Galleries Magazine*). Thoughtful complexity is demonstrated in these compelling compositions of expansive, brooding highland scenes – including the subtle introduction of textural detail in the foreground. In keeping with this shift towards greater naturalism, Campbell has introduced new colours to her palate bringing to life swathes of purple heather, pools of yellow wildflowers being chased by cloud shadows and blue horizons shrouded in mist.

This exhibition offers us a true sense of the artist's enjoyment in the physical act of painting and her latest pictures are nothing short of pure majesty. Their vast, open landscapes please the mind and causes the spirit to soar.

**Catherine Messum**

London, February 2006



**Summer Skies (Rannoch Moor)**, 2006, oil on linen, 4 x 6 ft (122 x 183 cm)



**Clouds (Rannoch Moor)**, 2006, oil on linen, 4 x 6 ft (122 x 183 cm)





**Golden Sands (Hebrides)**, 2006, oil on linen, 4 x 6 ft (122 x 183 cm)



**Summer (Argyllshire)**, 2006, oil on linen, 4 x 6 ft (122 x 183 cm)



**Autumn Moor (Hebrides)**, 2006, oil on linen, 4 x 6 ft (122 x 183 cm)



**Late Afternoon Light on Rannoch Moor**, 2006, oil on linen, 4 x 6 ft (122 x 183 cm)



**Summer Light (Argyllshire)**, 2006, oil on canvas, 4 x 5 ft (122 x 152 cm)



**Summer Evening (Argyllshire)**, 2006, oil on canvas, 4 x 5 ft (122 x 152 cm)





**Sun on Rannoch Moor**, 2006, oil on linen 24 x 37 in (62 cm x 93 cm)



**Light on the Mountains**, 2006, oil on linen, 18 x 24 in (46 x 61 cm)



**Mountain Rain (Hebrides)**, 2006, oil on canvas, 2 x 2 ft (61 x 61 cm)



**Summer Clouds (Argyllshire)**, 2006, oil on canvas 3 x 4 ft (91 x 122 cm)



**River Lights (Thames) 1**, 2005, oil on canvas, 16 x 38 in (41 x 71 cm)



**River Lights (Thames) 2**, 2005, oil on canvas, 16 x 38 in (41 x 71 cm)



Evening Light (Thames at Battersea) 1-6, 2005, oil on board, 5 x 7 in (13 x 18 cm)



# Oona Campbell

## Solo Exhibitions

- 2006** *Weather & Light*, MacLean Fine Art, 5 Blenheim Crescent, London
- 2005** *Art London 2005*, with MacLean Fine Art, Burton's Court, Chelsea, London
- 2004** *New Paintings*, MacLean Fine Art, Arndean Gallery, Cork Street, London
- 2002** *New Paintings*, MacLean Fine Art, Arndean Gallery, Cork Street, London
- 2001** *Art London 2001*, with MacLean Fine Art, Duke of York's Headquarters, Chelsea, London
- 2000** *New Paintings*, MacLean Fine Art, London
- Seascapes & Landscapes – Part 2*, Friends Room Victoria & Albert Museum, London
- Seascapes & Landscapes – Part 1*, Friends Room, Victoria & Albert Museum, London

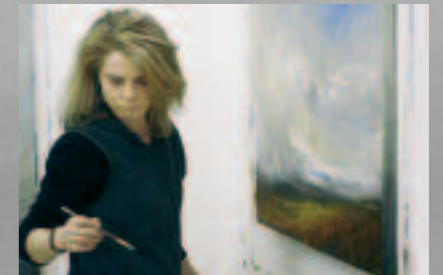
## Selected Group Exhibitions

- 2006** *London Art 2006*, with MacLean Fine Art, Islington, London
- 2005** *November Exhibition*, Joanna Eastwood Fine Art, Winchester
- Group Exhibition*, Ainscough Contemporary Art, Dartmouth, Devon
- Glasgow Art Fair*, with The Gatehouse Gallery, Glasgow
- Cannes Art Fair*, with The Gatehouse Gallery, Glasgow
- 2004** *Glasgow Art Fair*, with The Gatehouse Gallery, Glasgow
- Easter Exhibition*, Lemon Street Gallery, Truro
- The Art Alliance Auction of Small Works*, in aid of Cancer Resource Centre, St James's Piccadilly, London
- Scottish Contemporary*, Wet Paint Gallery, Cirencester, Gloucestershire
- 2003** *Fresh Paint 3*, MacLean Fine Art, Arndean Gallery, Cork Street, London
- Postcards Exhibition*, Royal Glasgow Institute, RGI Kelly Gallery, Glasgow
- Starting a Collection*, Art First, Cork Street, London
- Landscape into Art*, Linton Court Gallery, North Yorkshire
- Earth and Water*, Contemporary Art Holdings, Gloucestershire
- Depaul Trust Charity Auction*, Royal Academy of Arts, London
- 2002** *New Work by Fourteen Artists*, Joanna Eastwood Fine Art, Winchester

- 2001** *140th Annual Exhibition*, Royal Glasgow Institute, Glasgow
- The British Landscape*, Society of Landscape Painters, The Mall Galleries, London
- Art 2001*, London Contemporary Art Fair, Business Design Centre, Islington, London
- In House*, Parker Harris Exhibition, The Mall Galleries, London
- Hunting Art Prize Exhibition*, Royal College of Art, London
- 2000** *Discerning Eye Exhibition*, Mall Galleries, London
- 1999** *Royal Institute of Oil Painters Annual Exhibition*, The Mall Galleries, London
- City of Westminster Arts Council Annual Open Exhibition* (first prize), St. Martin's Gallery, London
- The Laing Art Exhibition*, The Mall Gallery, London
- Blackheath Gallery, London
- 1998** *Attlee Foundation Exhibition*, Royal College of Art, London
- City of Westminster Arts Council Annual Open Exhibition*, St. Martin's Gallery, London
- 1986–89** *Visual and Performing Arts*, BA Hons, Brighton University

## Collections include

- Aon Group Ltd
- Centrica Plc
- City of Westminster Permanent Collection
- Jupiter International Group
- Lowry Hotel, Manchester
- Morgan Stanley Property Management UK
- Royal Bank of Scotland
- Saville & Co
- SISU Capital
- Spirent PLC
- Numerous private collections





# MacLean

FINE ART

Published by MacLean Fine Art, London

Copyright © 2006, MacLean Fine Art

All rights reserved

No part of this publication may be reproduced, stored  
in a retrieval system, or transmitted in any form or by any  
means electronic, mechanical, photocopying, recording,  
or otherwise without the prior written permission  
of MacLean Fine Art



#### PHOTOGRAPHY

Angelo Plantamura, London

John Jones, London

#### DESIGN

Strule Steele, London

#### PRINT

Buccluch Printers Limited, Hawick

Dimensions given height before width.

Price range: £350–£9,000 (including VAT).

Paintings are available for purchase prior to the exhibition.

Evening Loch, oil on linen, 60 x 72 in, (152 x 183 cm), £9,000

Summer Skies (Rannoch Moor), oil on linen, 48 x 72 in, (122 x 183 cm), £7,000

Clouds (Rannoch Moor), oil on linen, 48 x 72 in, (122 x 183 cm), £7,000

Golden Sands (Hebrides), oil on canvas, 48 x 72 in, (122 x 183 cm), £7,000

Summer (Argyllshire), oil on linen, 48 x 72 in, (122 x 183 cm), £7,000

Autumn Moor (Hebrides), oil on canvas, 48 x 72 in, (122 x 183 cm), £7,000

Late Afternoon Light (Rannoch Moor), oil on linen, 48 x 72 in, (122 x 183 cm), £7,000

Summer Light, oil on canvas, 48 x 60 in, (122 x 152 cm), £6,500

Summer Evening, oil on canvas, 48 x 60 in, (122 x 152 cm), £6,500

Summer Clouds (Argyllshire), oil on canvas, 36 x 48 in, 91 x 122 cm), £4,000

Sun on Rannoch Moor, oil on linen, 24 x 36 in, (62 x 93 cm), £2,800

Mountain Rain (Hebrides), oil on linen, 24 x 24 in, (61 x 61 cm), £2,250

River Light I (Thames), oil on linen, 16 x 28 in, (41 x 71 cm), £2,000

River Light II (Thames), oil on linen, 16 x 28 in, (41 x 71 cm), £2,000

Light on the Mountains, oil on linen, 18 x 24 in, (46 x 61 cm), £1,800

Evening Light (Thames) 1–6, oil on canvas board, 5 x 7 in, (13 x 18 cm), each £350, set £2,000

All the paintings in the exhibition can be seen on our website at [www.macleaneart.com](http://www.macleaneart.com)

E&OE